

# **Motus Traffic Limited**

**TM-150-2 Technical Reference Guide  
Extraction of Logs from the TM-150-2 Web Interface**

**Version 1**

**INTENTIONALLY BLANK**

**For product information and customer support please contact:**

Iain Ross at Motus Traffic  
mail: [iain.ross@motustraffic.com](mailto:iain.ross@motustraffic.com)  
Phone: +44 1142 617 394

## Copyright Notice

© Copyright Motus Traffic Ltd 2010-2016

The information contained in this document is subject to change without notice.  
This document contains proprietary information that is protected by copyright.  
All rights are reserved.

No part of this document may be reproduced or translated to another language without the prior written consent of Motus Traffic.

Motus Traffic will not be liable for errors contained herein or for incidental or consequential damages (including lost profits) in connection with the furnishing, performance or use of this material whether based on warranty, contract, or other legal theory.

**Document:** Technical Reference Guide No.3 – Extraction of Logs from the TM-150-2 Web Interface Issue 1

**Date:** March 2016

Motus Traffic Ltd  
342 Coleford Road  
Sheffield  
S9 5PH

## Record of Changes

The revision history of this document is shown below:

<b>Version</b>	<b>Revision</b>	<b>Author</b>	<b>Description of Changes</b>
A	1	I Ross	Initial Draft
1	0	I Ross	Updated format

## Table of Contents

1 Introduction .....	6
1.1 Related Documents .....	6
2. TM-150-2 Integrated Web Interface: Extraction of Logs.....	7
2.1 Logging In.....	7
2.1.1 Physical Connection.....	7
2.1.2 Login Page .....	7
2.2 Overview Tab .....	8
2.3 Log Tab .....	9
2.4 Log Out Tab .....	10

## 1 Introduction

This document provides user information about how to view and save the log files on the Motus TM-150-2 and TM-150-2P using the integrated web interface.

### 1.1 Related Documents

Other documents exist relating to the controller and are listed below:

TM-150-2 User's Manual	MOTUS/139/075000/001/3-2
TM-150-2P Service Manual	MOTUS/139/075000/002/3
TM-150-2 Programmer's Manual	MOTUS/139/075000/003/1
Motus Traffic RMS Manual	MOTUS/139/075000/004/B
TM-150-2 Training Notes	MOTUS/139/075000/005/A
TM-150-2 Spares List	MOTUS/139/075000/006/A
Motus TM-150-2 Reset Errors Guide	MOTUS/139/075000/009/1-1
Motus RMS OMU Set-up Guide	MOTUS/139/075000/009/2-1
Motus TM-150-2 Handset Commands Guide	MOTUS/139/075000/009/4-1
Motus RMS & Cloud Administration Guide	MOTUS/139/075000/009/5-1

## 2. TM-150-2 Integrated Web Interface: Extraction of Logs



Motus recommends Google Chrome or Firefox Browsers for best compatibility with the web pages

### 2.1 Logging In

The integrated web interface is accessed via a login page. The URL depends upon the type of connection to the TM-150-2 controller.

#### 2.1.1 Physical Connection

When using a physical connection via the Ethernet port, you connect to the web-server using an URL-specified IP address. The default address is `http://192.168.0.75`.

Network settings on the computer accessing the controller should be set to:

IP: 192.168.0.70  
Net Mask: 255.255.255.0

Gateway and DNS are unimportant.

#### 2.1.2 Login Page

Whichever way you access the controller the login page will be presented, shown in Figure 1.1.3

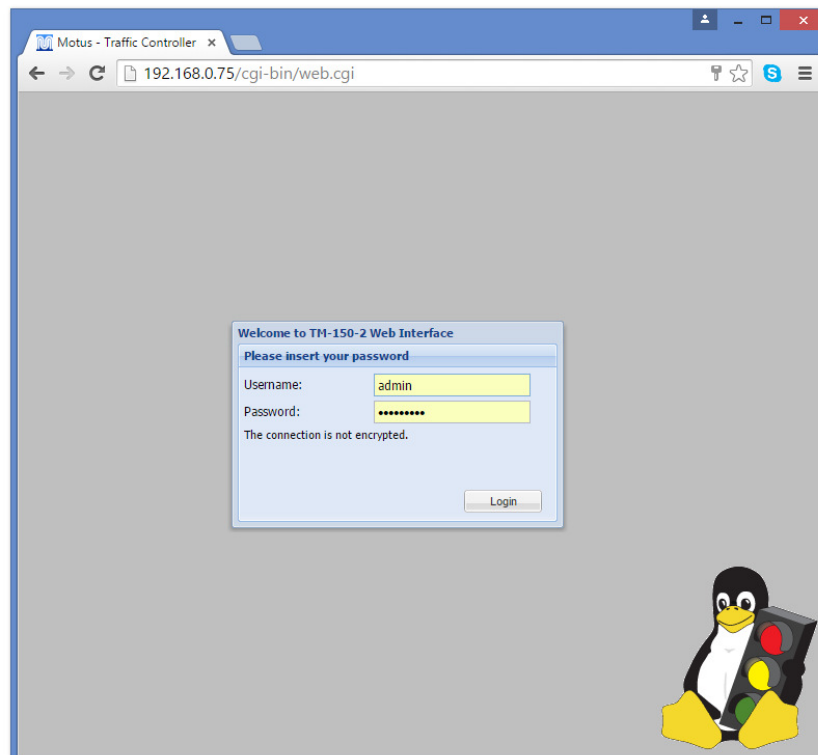


Figure 2.1.3 Login Page (Default username admin and password changeME1)

## 2.2 Overview Tab

The *Overview* tab is shown in Figure 2.2.1. It provides a composite view including a map with real-time information about the signal phases, a virtual clone of the text-based LCD on the control panel and an error log window.

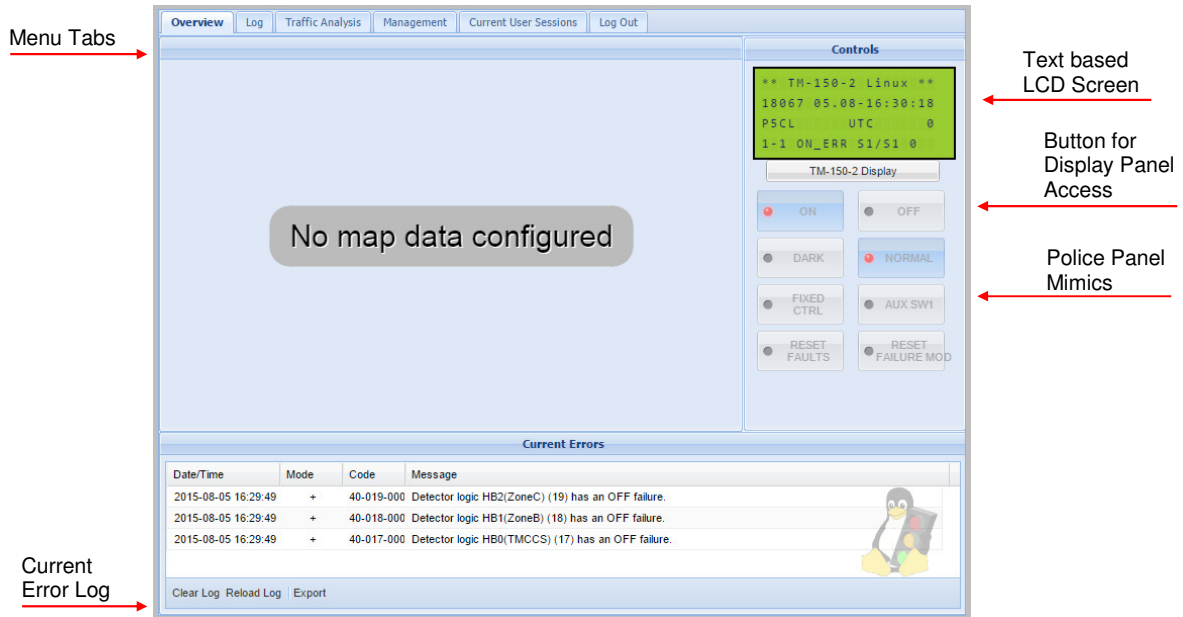


Figure 2.2.1 Overview Tab Display

The overview page is designed to present as much useful information as possible without appearing to be cluttered. The LCD screen in the control window is updated approximately once per second, providing real time information about the controller status. The police function keys in the control window are read-only, and you can see which buttons are active as they are coloured blue, whereas the inactive buttons are grey.

Just below the top menu tabs, the name of the intersection and the owner of the configuration are displayed for reference.

There is an optional map window, which can display a site layout map, with coloured icons showing the real time status of the signals. If the signals are off, the map will display but there will be no icons visible.

Below the map display is a space for current errors to be displayed. This error log can contain up to 64 entries. A scroll bar will appear if necessary. The log can be refreshed by pressing the **Reload Log** button, or exported to a `.txt` file for archiving.

Underneath the real time LCD display is a button which can bring up a graphical representation of the control panel, shown in Figure 2.2.2. The black buttons can be pressed to manipulate the display to show the user various parameters. The mode buttons and signal ON/OFF buttons are greyed out because they are inactive over the remote network.

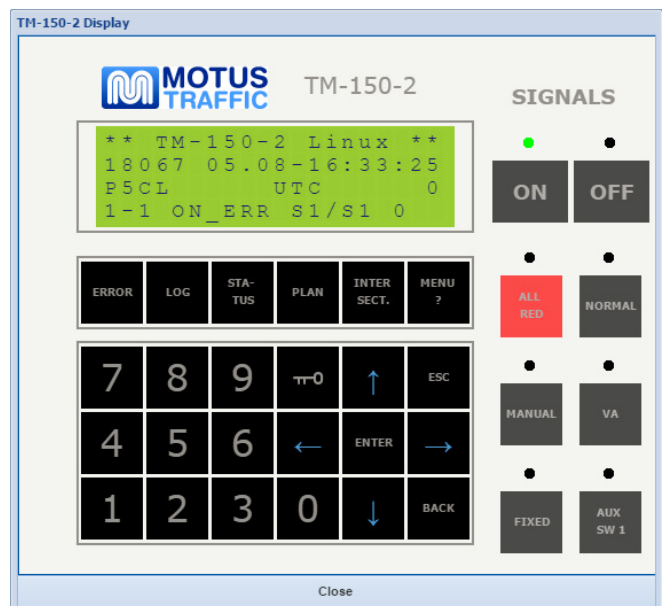


Figure 2.2.2 Control Panel Display



## 2.3 Log Tab

Click on the *Log* tab from the top menu to open the log display, shown in Figure 2.3.1. The default view will show the Error log. There must be at least one log being displayed. To view only the Lamp Error log, first click on the Lamp Log button, then click on the Error Log button to de-select the Error Log. Only the Lamp Log will be displayed.

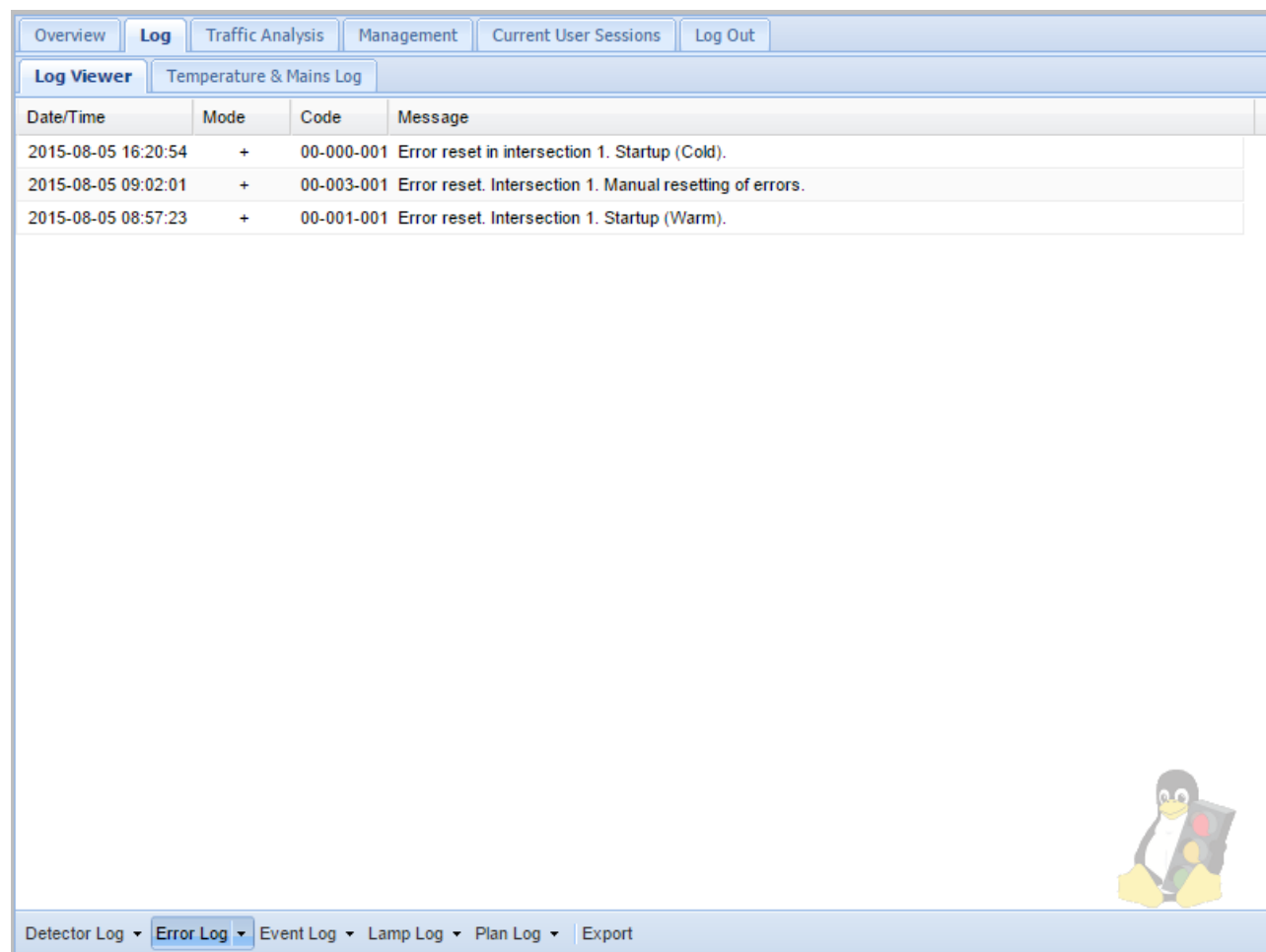


Figure 2.3.1 Log Viewer Tab Display

At the top of the page there are two sub menus:

- *Log Viewer*
- *Temp & Mains Log*

At the bottom of the page there are buttons that select the detailed logs:

- *Detector log*
- *Error*
- *Event log*
- *Lamp log*
- *Plan log*


Click on the small arrow to reload the log.

To the right of the log selection buttons, there is an export button. Hovering over the **Export** button will reveal some text that explains how to export the data to another program.

To export, simply press the Export button, and a new browser tab will open with the log in it. Select All (Ctrl+A) Copy (Ctrl+C), and Paste (Ctrl+V) into the desired program such as notepad++ or MS Word.

Click on the Temperature & Mains log to see the daily temperature and mains supply maximum and minimum values. Unfortunately there is no way to export these, so they have to be manually recorded. A screen shot is often the easiest way to do this, press the **PrtScn** button.

<a href="#">Overview</a>   <b>Log</b>   <a href="#">Traffic Analysis</a>   <a href="#">Management</a>   <a href="#">Current User Sessions</a>   <a href="#">Log Out</a>					
Log Viewer   <b>Temperature &amp; Mains Log</b>					
Date	Min. temp.	Max. temp.	Min. mains.	Max. mains.	
2015-08-05	08:37:41: +27 °C	09:36:52: +34 °C	08:35:34: 0 V	08:35:34: 0 V	
2015-08-04	10:31:30: +28 °C	11:10:19: +34 °C	10:27:43: 0 V	10:27:43: 0 V	
2015-08-03	14:27:00: +29 °C	14:45:39: +34 °C	14:23:31: 0 V	15:02:41: 10 V	
2015-07-30	08:33:47: +24 °C	09:10:05: +31 °C	08:31:44: 0 V	08:31:44: 0 V	
2015-07-29	06:48:16: +24 °C	15:00:17: +34 °C	06:46:09: 0 V	06:46:09: 0 V	
2015-07-28	07:14:18: +24 °C	15:29:10: +31 °C	07:12:25: 0 V	07:12:25: 0 V	
2015-07-24	08:35:26: +24 °C	08:52:54: +28 °C	08:33:33: 0 V	08:33:33: 0 V	
2015-07-23	07:07:48: +25 °C	09:14:41: +32 °C	07:05:48: 0 V	07:05:48: 0 V	
2015-07-22	14:13:32: +30 °C	14:54:18: +34 °C	14:12:04: 0 V	14:12:04: 0 V	



<u>Temperature</u> Global min : 2015-07-24 08:35:26: +24 °C Global max : 2015-07-22 14:54:18: +34 °C	<u>Mains</u> Global min : 2015-07-22 14:12:04: 0 V Global max : 2015-08-03 15:02:41: 10 V
--	---

**Figure 2.3.2 Temperature & Mains Tab Display**

## 2.4 Log Out Tab

Simply click on it to end the session. The controller then returns to the log in screen.

**END OF DOCUMENT**